

FAST SERIES ST: 50-150 W

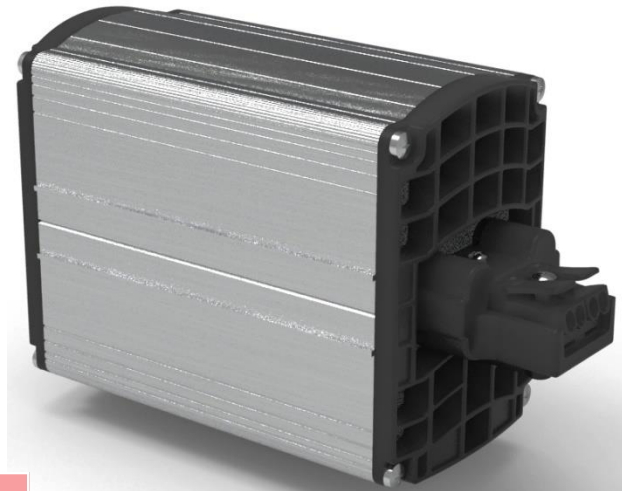
The heaters of the FAST series are made from Aluminum to maximize heat transfer and utilize PTC in the heating process.

PTC thermistors are designed to maintain their temperature, keeping heaters constantly stable.

Safety Touch technology ensures a limited surface temperature (max 50°C @ 20°C room T) making it safe to the touch.

The heaters are equipped with a 2p spring terminal block for easy connection without tools.

All the heaters are designed according to IEC EN 60335-1 standard and applicable for industrial use only.



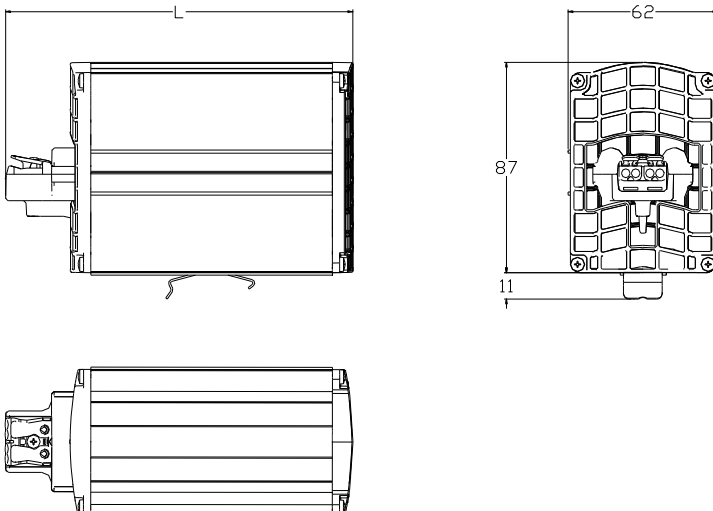
TECHNICAL DATA

Heating power	50, 100, 150W
Voltage supply	110 - 230 Vac-dc
Voltage insulation	2500V @ 50Hz, 1 min
Heating element	PTC
Heat sink / Plastics material	Al 6061 / UL94 V0
Protection class	II - IEC 60335-1
Protection degree	IP20
Max surface temperature	< 50 °C @ 20°C*
Operating temperature	-40 +60 °C
Storage temperature	-40 +70 °C
Max wire section	2.5 mm ²
Mounting	35mm DIN rail

* Room Temperature

MODELS

Type	u.m.	FST050	FST150	FST150
Heating	W	50	150	150
Dimensions LxHxD	mm	100x62x87	144x62x87	170x62x87
Weight	kg	0,4	0,55	0,7
In rush current	A	2,5-3,5	3,0-3,5	5,0-6,0
Protection fuse	A	GG 2	GG 2	GG 4



EXPERT'S TIPS

Place the heater in the lower part of the enclosure, to favor the thermal convection.

Keep a safe distance of at least 150mm between the heater and electrical devices.

Visually check that the heater is not closed in a niche or obstructed by other components, in order to uniformly distributed the heat.

Avoid any possible contact between the heater and wiring cables.